



**SMARTHOME**  
GROUP  
*Smart home for everyone*



#### Contact Us



**SMARTHOME GROUP INC.**  
USA

Tel : +1-310-8643780  
E-Mail: [digitcom@eim.ae](mailto:digitcom@eim.ae)  
Addr : Beverly Hills, Santa Monica,  
California 90404 United States  
of America.



Tel : +971 4-3388604  
Fax: +971 4-3388605  
Addr : M-06A Ahmed Bin Jumaa Al  
Maktoum Bldg., Sheikh Zayed Road,  
Dubai, UAE.



**SMART**  
GROUP  
**DONG GUAN SHIMA ELECTRONIC CO.,LTD**

Tel : (0086) 769 8393 1277(813)  
Fax : (0086) 769 8117 8867  
Addr : No.135, Huancheng Road, Mawu Village,  
Qiaoli Management Community, Changping Town,  
Dongguan City, Guangdong Province, China.



[www.smarthomebus.com](http://www.smarthomebus.com)



# About Smart Group

## Company Profile

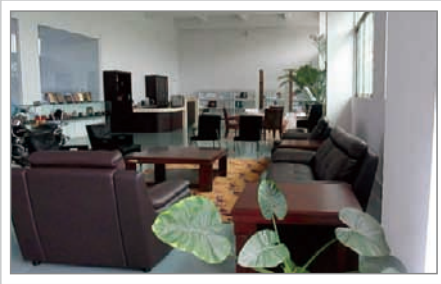


**Smart-Group** was originally Established by Digitcom: A Santa Monica based company Registered in California in 1986. Since its establishment the Company has concentrated research and development on Technology of Communication and Control with several Patents and registered Trade Marks. The Company has grown in size, collective expertise and has branched into many countries around the world.

**Smart-Industry Group** is a group of Companies that works together to fulfill One Target:(Techno Lifestyle Product Development and Solution Packaging)



Factory



Smart Bucks



Meeting Room



R&D Department



Tooling / Plastic Injection



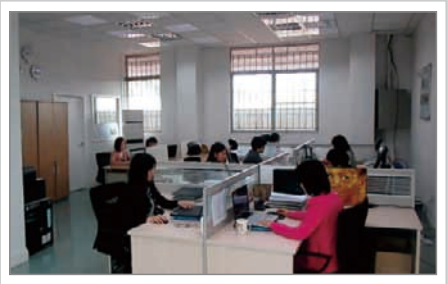
Moulding Machine



SMT



Training Center



Sales Department



Warehouse



Production Department



KTV Showroom / Cinema Showroom

## Patents



## ISO & CE Mark



## Awards





# Frequently Asked Question

## What Is Home Automation?



**Home automation** is the residential extension of building automation. It is automation of the home, housework or household activity. Home automation may include centralized control of lighting, HVAC (heating, ventilation and air conditioning), appliances, security locks of gates and doors and other systems, to provide improved convenience, comfort, energy efficiency and security.

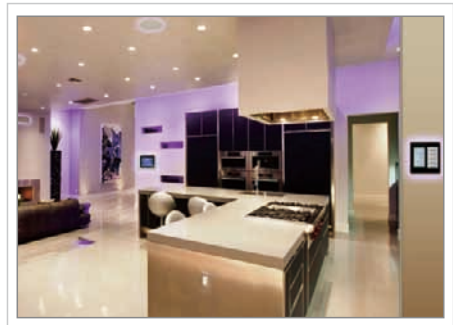
## What Is Smart-Bus Technology?



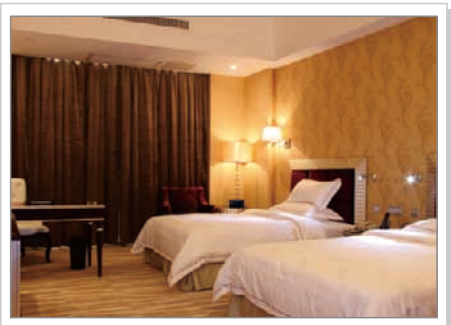
"Smart-BUS ®" is a patented Protocol (Patent No: 201110123081.0) Based on "Advanced RS485" 64 Bits Communication. This 2-Way Smart-BUS Communication Protocol was Designed Mainly for Home Automation Industry and thus many call it today "SmartHome-BUS" or Simply "S-BUS". The S-BUS Engine Drive Many Hardware Devices, Command, Monitor and Control them simultaneously in smooth and confirmed 2-Way Communication ability using Simple 4-Core Twist Pair Data Cable that is widely available in the market.

The Smart-BUS has Multi Edge technology to Easily Communicate with multi Nodes; Wirelessly via the "W-BUS" in what is called the "S-Mesh®" Environment. Also It can Communicate with FTP/UDP/TCP Via what is Called the "S-Net" Environment. This "Smart-BUS" Multi-Edge Environment and the Core System technology are Called collectively: the "Smart-Cloud®"

## Application



Home



Hotel



Office



School



Museum



Hospital

# Latest Wireless Technology

## What is S-wave?



**S-wave** is a new generation home automation wireless Mesh technology that enables the direct conversion of the Smart-Bus Automation products to connect with each other wirelessly.

**S-wave** is the device you can connect to the wired Smart-Bus products and to Trail Click mini modules to make them work wirelessly in an interactive mesh environment.



*Simple connect Simple Life*

## Where To Use?



S-Bus Wired Network, with S-Wave Wireless Links

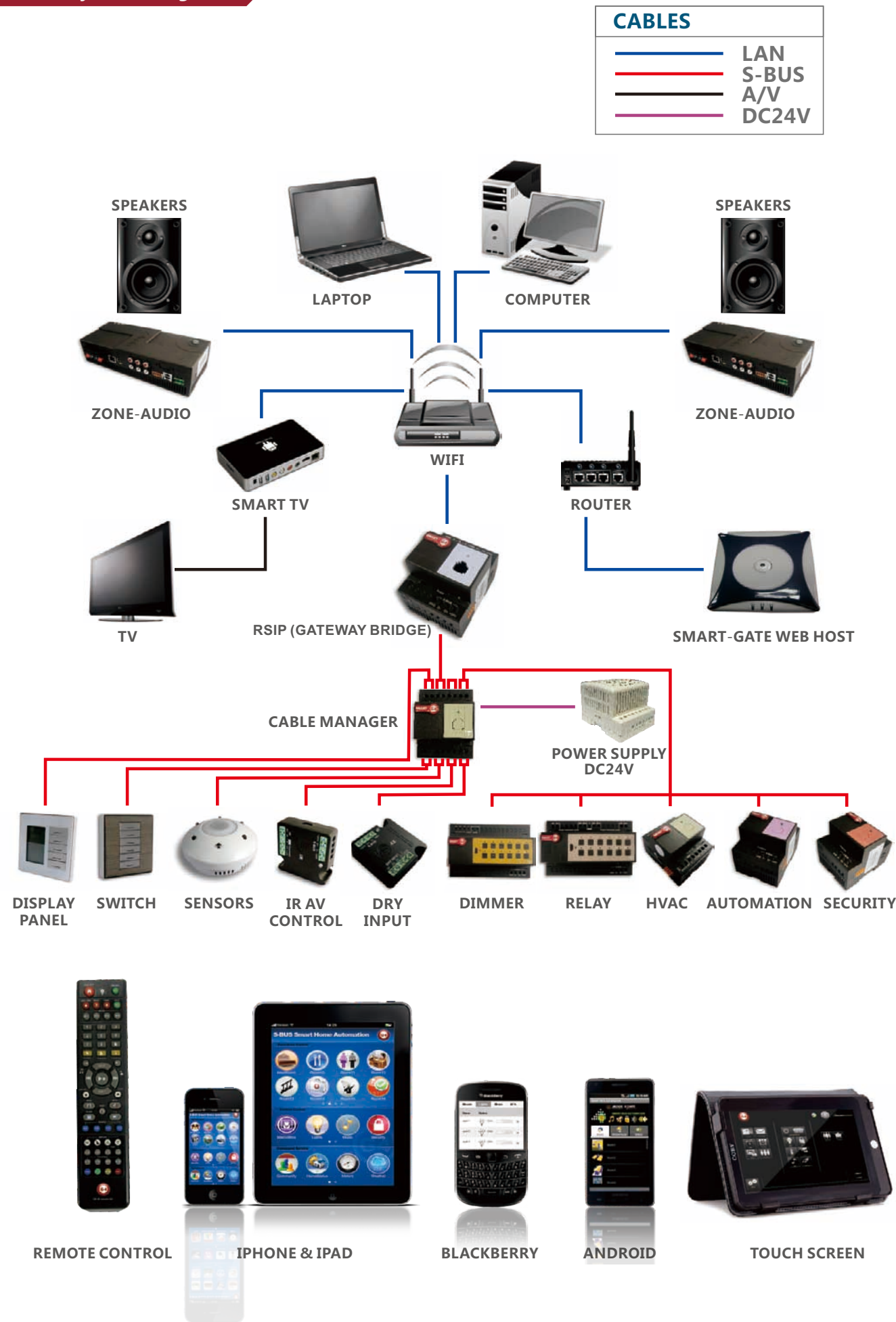


S-Wave Pure Wireless Network



# Connection Diagram

## General System Diagram



# Smart Bus G4 Products

## Control Panels

**Description:**  
All in one wall Switch, the DDPs is an elegant and easy to use wall panel that eliminates wall agony. It has built in thermostat, changeable labels to identify every button use, can control lights, curtains, temperature, music, and TV. DDPs has easy fascia color and material changing flexibility to help match any interiors. The DDPs has screw less mounting mechanism, security lock, easy upgrade mini-USB, re-locatable IR receiver probe, LED backlit buttons and LCD screen. DDPs can accept Multi languages, Icons and Graphics

**Coming Soon**

DDPs

Dynamic Display Panel DDP

6 Button Switch Wall Panel

4 Button Switch Wall Panel

3 Button Switch Wall Panel

Access Control Panel

Door Access Reader Panel

Door Bell

Door Bell Access & Child DND

Smart Museum Panel

Meeting Board Room Control

Bedroom Control Bedside

Hand Held IR Remote Control

## Audio & Media Control

**Description:**  
Distributed Audio Zone Player and Amplifier. Can Deliver up to RMS 48 Watts of Stereo. With Balanced Out to connect to Pre-Amplifier Booster. With Built in FM Radio Tuner, Built in SD Card Reader slot. Can Stream Digital Audio Through LAN/FTP from any PC or NAS on the Network. Advanced PA Port that can detect Audio Announcement Automatically mute current playing source, announce then switch back to the same music source again once announcement is completed. Additional RCA Stereo Input for Direct Local Source Feed to allow local Music ports to connect direct from TV, DVD, Ipod Dock or any other Source.

Zone-Audio 2

Resound Wall Art Speaker

Ceiling Speaker

Outdoor Speaker Water Proof

Power Supply Dual Polarity

Smart Bus G4 Products

Hotel GRMS




23 port Zone Beast Module


**Description:**  
This Mix Control module is designed to Handle almost all needs of any Luxury Zone Like Master Suite, Hotel Room or 1-2 bedroom apartment. A Single Module contains 3Ch Dimmers X each is 1A, and 9ch Relays X each is 6A /per ch. with scene controller. 4RelaysX6A With Double Throw for Motorized curtains and Drapes. 1Relay X 16A for Boiler and Floor Heating. HVAC module for FCU/AHU to Handle Multi stage Cooling, heating, and 3 fan Speed (L M H). Built in 1Port for 0-10V VAV and Ballast Control. Added Port for T1 Temperature Sensor for Duct Temperature.




Hotel Dynamic Display Panel




Hotel Bell w/ Access & Service



Hotel Card With Service



Hotel Bedside Controller



Hotel Bell Panel with Service



Power Auxiliary




RSIP



Hotel Card Encoder

Climate Control




HVAC Module


**Description:**  
DIN-Rail Mount Advanced Climate Control Module that installs near HVAC unit to save cost of wiring and to eliminate the need for standard ugly thermostats. being S,BUS enabled it can be controlled flexibly from any DDP panel and any BMS Automation Software. The HVAC2 Module can control Single and Multi stage Units (Heat, Cool, Fan low, High, Medium, VAV 0-10VDC) it can Handle any FCU, AHU, VAV System. With easy labeling space, Comes ready with LED indicator, network health, broadcast button. Good for applications witch require energy saving, Health intelligent control such as residential, commercial or industrial.



HVAC Trail Click



Fan Speed Module



4T Input Module



Temperature Sensor Probe



IR Emitter with Macro



1Dimmer 1Relay 1Fan TC



IR Emitter w/ Current Sensor



Micro Climate Sensor

Smart Bus G4 Products

Lighting Control



Relay 12ch 10Amp

**Description:**  
DIN-Rail Mount Switched Pass Through Relay 12ch 10A /per ch. with scene controller Multi Phase, Multi-Current, Multi voltage. Software Selectable programmable Motor function: Double Throw Dipole Grouping. Work 220/110 VAC, 50-60Hz as well as 1.5-48VDC (Green operated supplied by 24VAC/12mA) Small and elegant with easy labeling space, output status LED indicator, network health, broadcast address button and Momentary channel button. Can be used in any location that require energy saving, intelligent control such as apartment, Villa, Offices, Restaurant, Hotels or factories. \*Can be Manually Programmed by any Electrician on site without need for PC.

\*\* (This is an Advanced 2-way module. Changing load status manually reflect and update on all Connected SW & Devices)



Dimmer 2ch 6Amp



Dimmer 4ch 3Amp



Dimmer 6ch 2Amp



Dimmer 8ch 1.5Amp



Relay 4ch 20Amp



Relay 6ch 16Amp



Relay 8ch 16Amp



Mix24 Controller



Flourecent Ballast(0-10V)



LED Driver/Dimmer 4Ch



DALI Bridge Module



DMX 48 Bridge Module



3Relay Trail Click



LED Flicker Supressor



2R Mini Relay Module 5A



3R Mini Relay Module



1Dimmer 1Relay Trail Click



2Dimmer 1Relay Trail Click



1Dimmer 2Relay Trail Click



2Relay Trail Click



# Smart Bus G4 Products

## Sensors & Input Devices



9 in 1 Multifunction Sensor

**Description:**  
One device has 9 functions designed perfectly for Automation Industry techno-lifestyle needs. This All-in-One device contains: (addressable Motion sensor, light intensity LUX sensor, Infrared receiver for easy access by remote control, 360 degrees infrared transmitter to control 250 IR codes of electronic equipment like TV, DVD...etc., addressable 2-Zone Dry contact inputs one is for Safety, and one is for Security to connect to the room window sensor and smoke detector or any other sensor, save the wiring and programming time, it has 32 Logic lines (if, then, and or, nand, nor), and it support Burglar Security Code input checking, arming and disarming, it has Built in Temperature Sensor that can be paired to HVAC2 Module, and for other reading needs)



PIR Motion Sensor



5 in 1 Multifunction Sensor



6 in 1 Multifunction Sensor



8 in 1 Multifunction Sensor



9 in 1 Multifunction Sensor



SpotIPIR



5z Mother Controller for SpotIPIR



Microwave & 3PIR Sensor



4Z Dry Input Module



S-wave Trail Click



Security/Safety Module



I/O

## Other Products

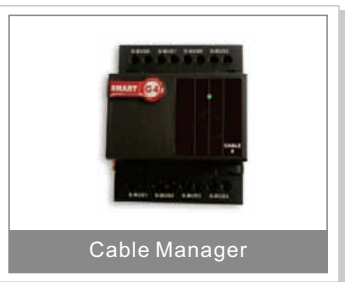


Automation Logic Module

**Description:**  
DIN-Rail Mount, Central Time Clock and Main Automation Controller. It is the smart system servant that assist and monitor temperature, events, energy consumption, patterns, with main Targets: maintain, safeguard, protect and economize. It Can Trigger prayer announcements, reminders, alerts, macros, and moods. Each Logic module Consist of 240 tables, Each Table of 4 programmable Logic Lines totaling up to 960 Line of Logics using simplified (and, Or Nand, Nor, with 255 Flags). logical condition consist of trigger combinations like: time, scene Light channel status, curtain status, room temperature, security mode, day night, time... and so on



Power Supply



Cable Manager



Connectors



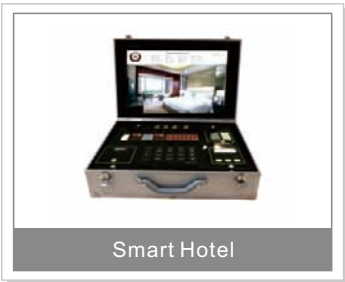
Impulse Meter

# Smart Bus G4 Products

## Demo & Learning Kit



Smart SOHO



Smart Hotel



Smart Museum



Self-Learning Kit

## Smart-Bus Apps



S-Wave App



S-Bus G4 App



Smart-Bus G4 App



Smart Hotel G4 App

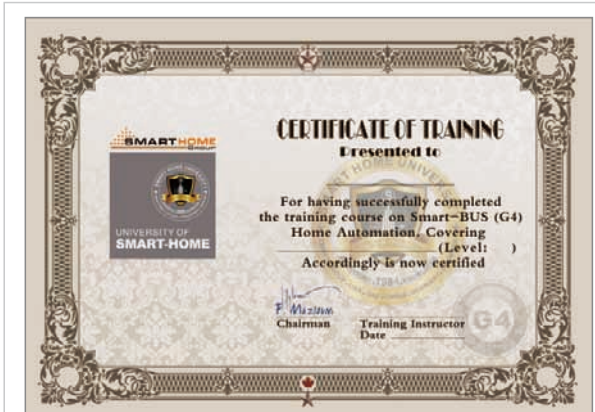
## Smart-Bus Training & Certification



Smart-Group Has designed Together with Smart Home University several Training Programs to make sure that all Dealers/Installers, Distributors and Consultants are always kept updated and upraised on latest solutions and technology that the Group has to offer in the Automation, Techno-Lifestyle, and Energy Industries Most of these training are Offered Free to the Active Network Partners. Periodical Training take Place at Different World Nodes Like: UAE, Egypt, Germany, USA, Denmark, China, India, South Africa, Australia, Thailand and Other Main Hubs.

### Genuine Certification:

Genuine Smart-Group Certification is Always Sealed By Smart Home / Digitcom Seal. And is Issued and Signed By Our Chairman and Training Director.



See more products on the Website: <http://www.smarthomebus.com>